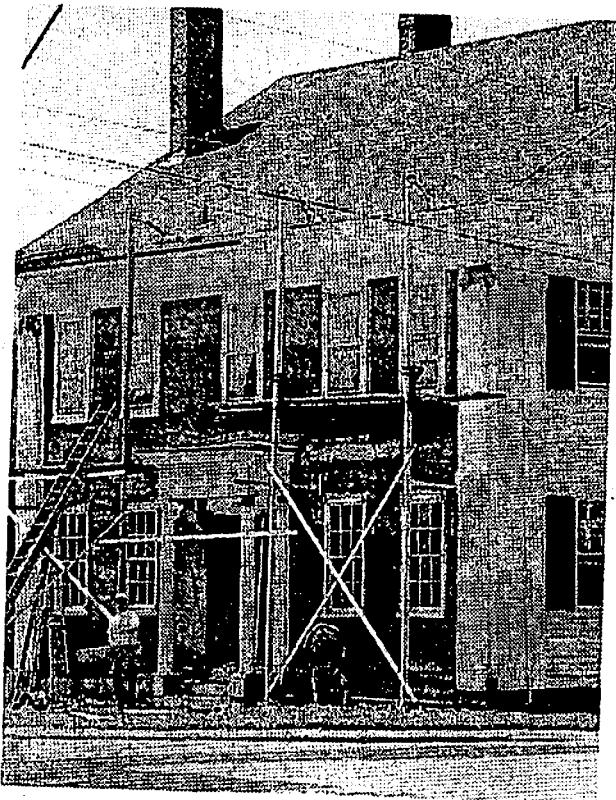


Historical Houses - NAMED, A-L

Duxbury Clipper, Wednesday, June 18, 1997

Commentary... Town Must Address Historic Preservation

By JEAN CLARK



Cable House, Washington St.

Will the Cable House be the wake-up call that Duxbury so urgently needs? The young owner, Phil Caliendo, who grew up in the house, and the builder, Brian Cox, both are interested in maintaining the original appearance of this important landmark. We are extremely fortunate that the property is in the hands of someone who has an appreciation of history because the town does not have one ounce of protection for its legacy of architectural treasures. Another person could have, if he or she chose, obtained a demolition permit upon request from the building department.

In 1833, Ezra Weston Jr. founded the Duxbury Bank, and the architect, now unknown, designed this building to reflect its importance in the maritime businesses which were the life blood of Duxbury in those days. The townspeople had immense pride in the fine Greek Revival details of this massive structure. This building became the office of the French Atlantic Cable in 1869, and during World War II, it housed the direct line from 10 Downing St. to the White House.

The work presently taking place is much needed maintenance, but the quality of detail in historic preservation requires expertise and craftsmanship. All of which can often add up to more than the homeowner can afford. There are many organizations in Massachusetts, private and public, which stand ready to give assistance in restoration efforts.

The selectmen and the town boards and committees involved in land issues must address the real concerns of its citizens and take action to initially enact a demolition delay ordinance for older buildings (common in many towns). The next step is to educate the public on the necessity of an historic district. The rural and historical character of Duxbury, cited on the Protective By-Law, is at risk. It takes a grass roots movement at this point in time.